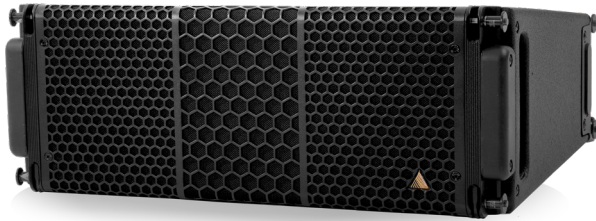


S7



The S7 is a 2-way, full range line array cabinet containing 2x ND7-LM16 Kevlar Neodymium drivers (2x 16 Ω) and an NH3-8 1.4° exit compression driver (8 Ω). The critically optimized sound chamber produces a slightly curved wavefront with a nominal dispersion pattern of 100° x 12.5° (H x V). The chamber's efficiency allows for increased vertical dispersion without sacrificing high frequency presence in the far field. Patented Controlled Summation Technology further eliminates low-mid lobing normally associated with 2-way line source systems.

The cabinet construction uses marine grade birch plywood as well as aircraft grade steel and aluminum, and is equipped with two Speakon™ NL8 connectors. The SlideLock rigging system ensures easy yet secure setup and teardown.

The S7 is suited to a wide variety of applications. Its full range capability (80 Hz) at reasonable levels qualifies for applications where sub is not required. Increased vertical coverage (12.5°) enables the S7 to cover theaters and small arenas with reasonable speaker quantity. Other target applications include dance clubs, corporate events and contemporary churches.

Specifications

Frequency Range (+/- 3dB)	80 Hz - 18 kHz
Nominal Directivity (-6 dB) H x V	100° x 12.5°
Maximum Peak SPL**	137
Components LF	2x ND7-LM16 7" Kevlar Neodymium Driver
Components HF	Adamson NH3-8 3" Diaphragm / 1.4" Exit Compression Driver
Nominal Impedance LF	2 x 16 Ω (8 Ω)
Nominal Impedance HF	8 Ω
Power Handling (AES / Peak) LF	500 / 2000 W
Power Handling (AES / Peak) HF	120 / 480 W
Rigging	SlideLock Rigging System
Connection	2x Speakon™ NL4
Height Front (mm / in)	203 / 8
Height Back (mm / in)	122 / 4.8
Width (mm / in)	527 / 20.75
Depth (mm / in)	411 / 16.2
Weight (kg / lbs)	15.9/ 35
Processing	Lake

**12 dB crest factor pink noise at 1m, free field, using specified processing and amplification

